

Society of Thoracic Surgeons General Thoracic Surgery Database

Quality Improvement Series: Reducing Readmission Rates

October 23, 2024

The logo for the STS National Database is centered within a large white circle. It features the text "STS National Database" in a bold, sans-serif font, with "STS" in red and "National Database" in dark blue. Below this, the tagline "Trusted. Transformed. Real-Time." is written in a smaller, dark blue font.

STS National Database[™]
Trusted. Transformed. Real-Time.

Agenda

- Welcome and Introduction
- Review Readmission Data
- Q&A

STS NDB Quality Improvement Series

What are our GOALS?

To show value of the database outside of just getting reports and Star Ratings

Decrease Cost

Showing how important YOU are in abstracting Data

Be part of a National Team Effort

Making your STS data actionable

Because it's awesome to work toward something together

Readmission Rates – Why do we care

Readmitted Patients

- Higher Complication Rates
- Higher Rate of Infection
- Increased Rate of Mortality
- Longer Recovery Times
- Increased Opioid Utilization
- Quality of Life Impact
 - Patient Reported Outcomes

Health Systems

- Throughput Challenges
 - Complications & Readmissions Increase LOS
- Increase Cost associated with complications
- Decreased reimbursement risk
 - CMS Hospital Readmission Reduction Program



How do we do it???

Define

Nationally decrease readmission rates for Lung Cancer patients.

Measure

Baseline data to be pulled from the Spring 24 Harvest Analysis Report. Mean readmission rate and mean LOS will be reported.

Analyze

Using the STS Harvest Reports, sites will implement processes at their sites to decrease readmission rates. STS will provide education and support for processes.

Improve

Will engage site leaders who have already accomplished decreased readmission rates and to provide education on webinars and be available as resources.

Control

Will track monthly to see improvement nationally.

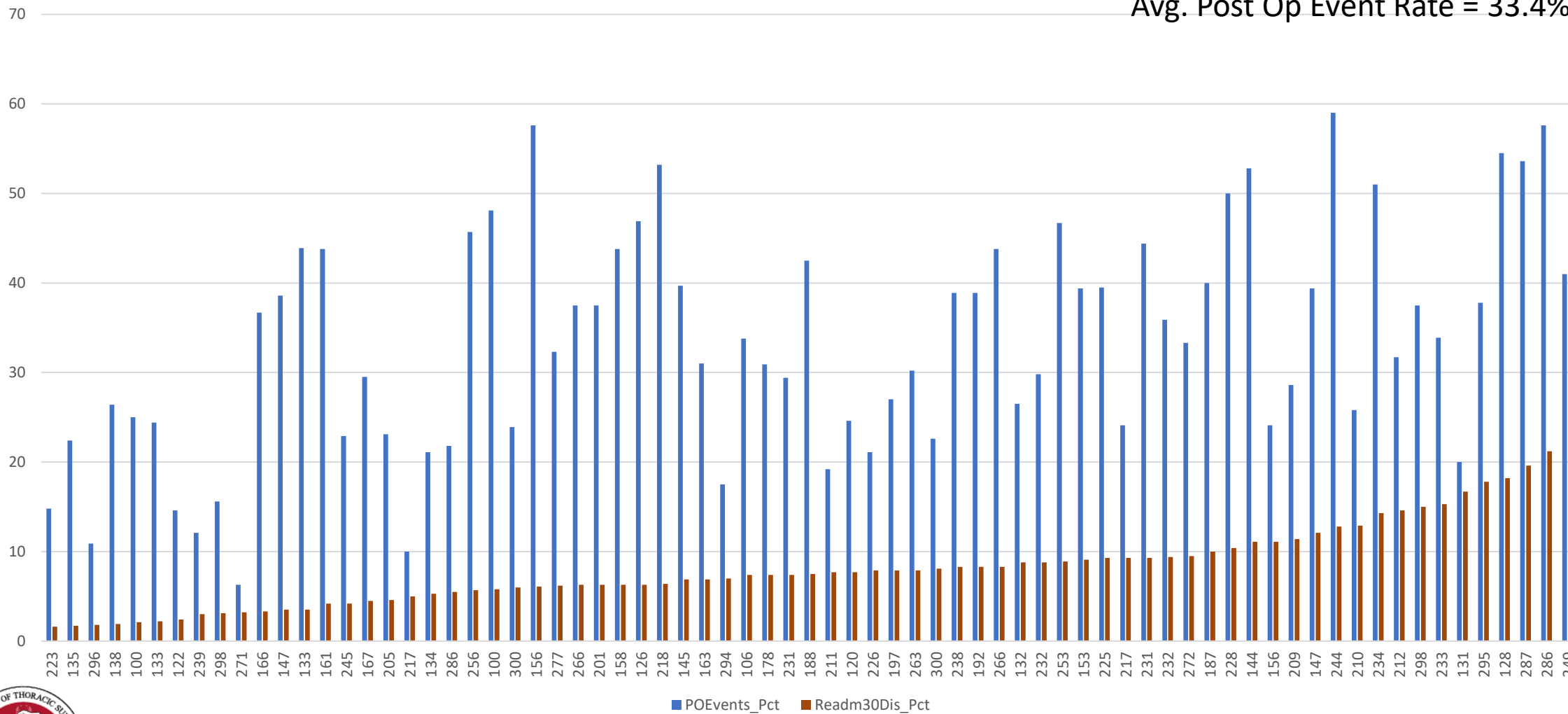


Let's Take a Look at the Data

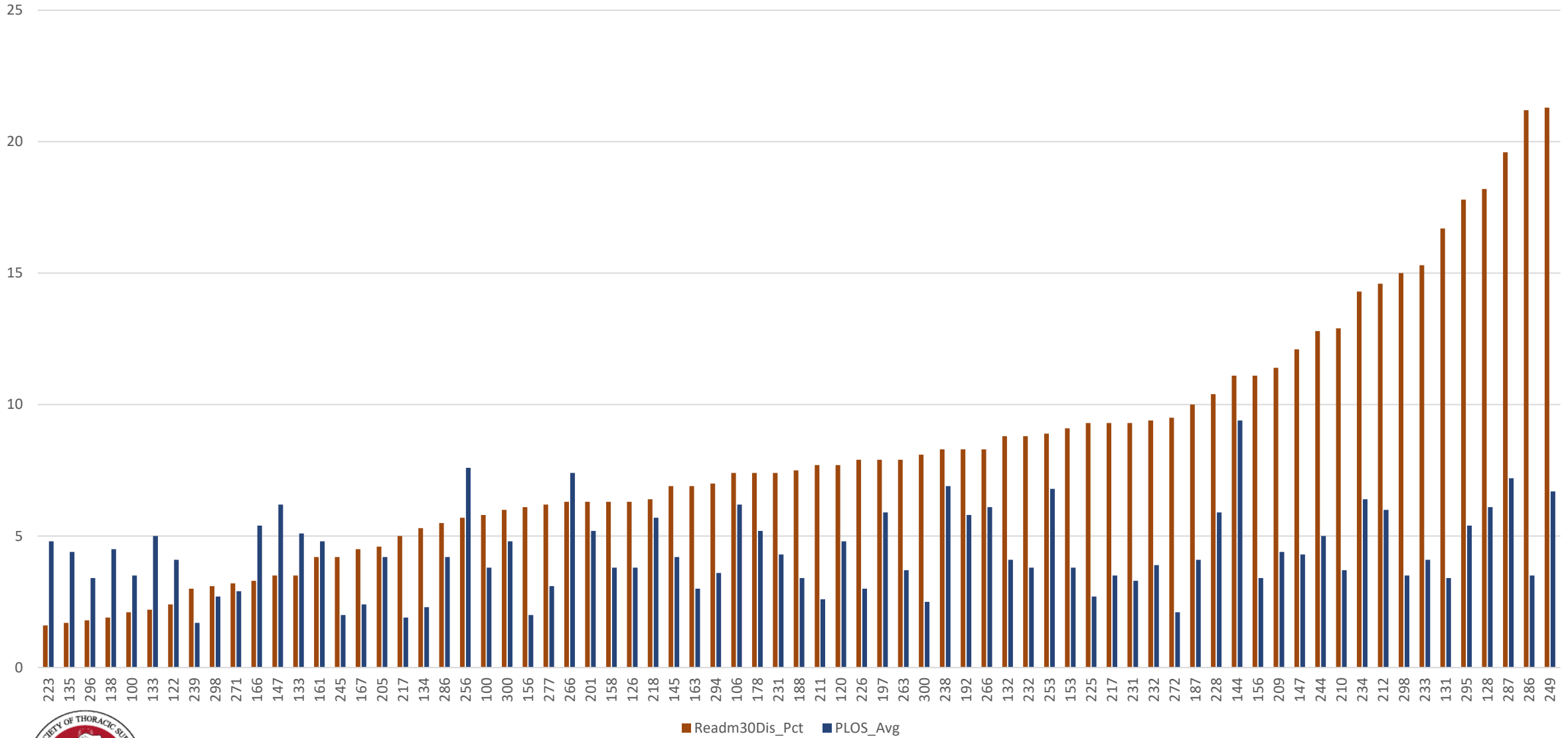
- Review Readmission and Complication Rates by Institution (based on volume)
- Moving Forward - Will continue to take a deeper dive into Readmission Rates/specific POEs and PLOS

Readmission and Complication Rate
Sites with 30 - 69 records

Avg. Readmission Rate = 8.2%
Avg. Post Op Event Rate = 33.4%

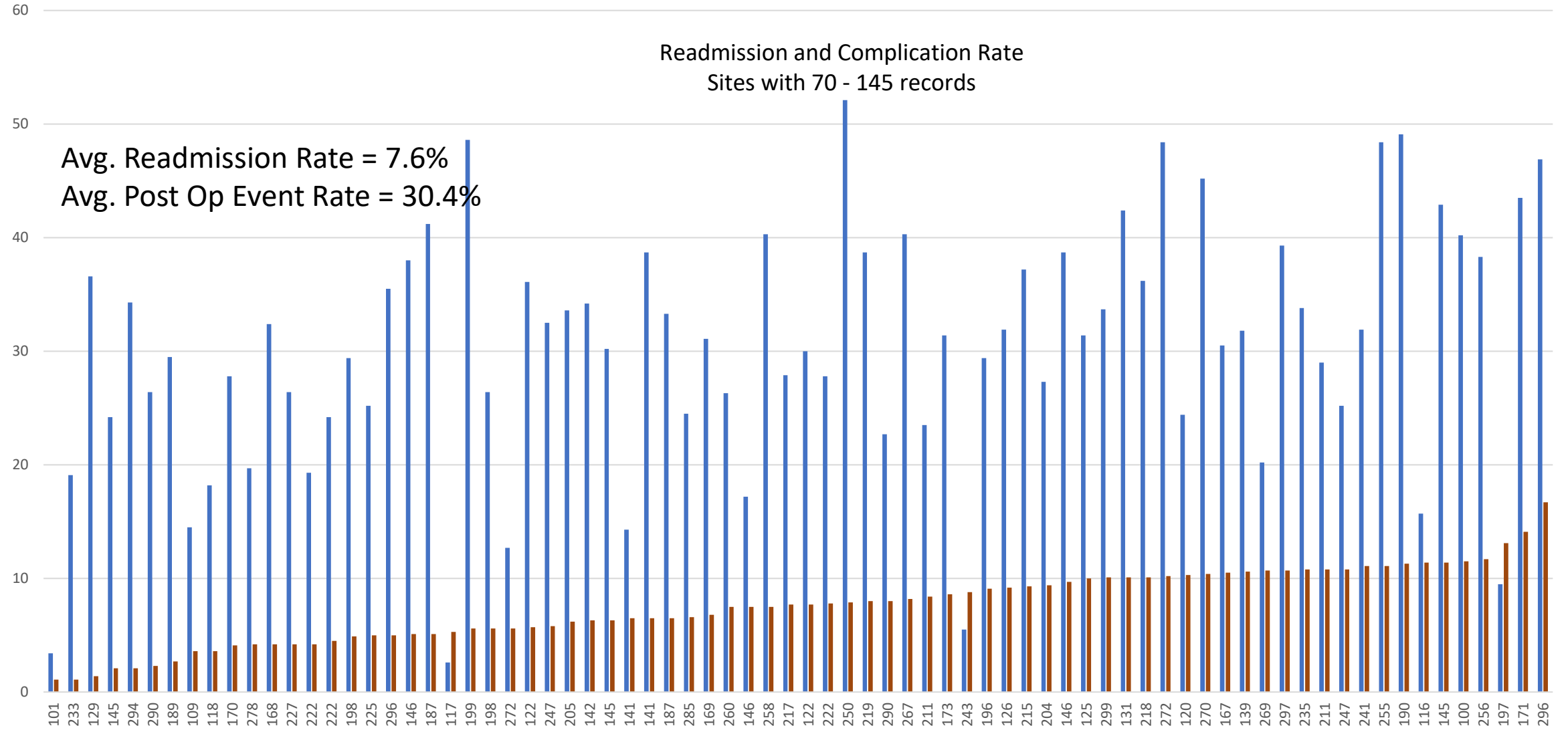


Readmission with Post-Op LOS Sites with 30-69 records



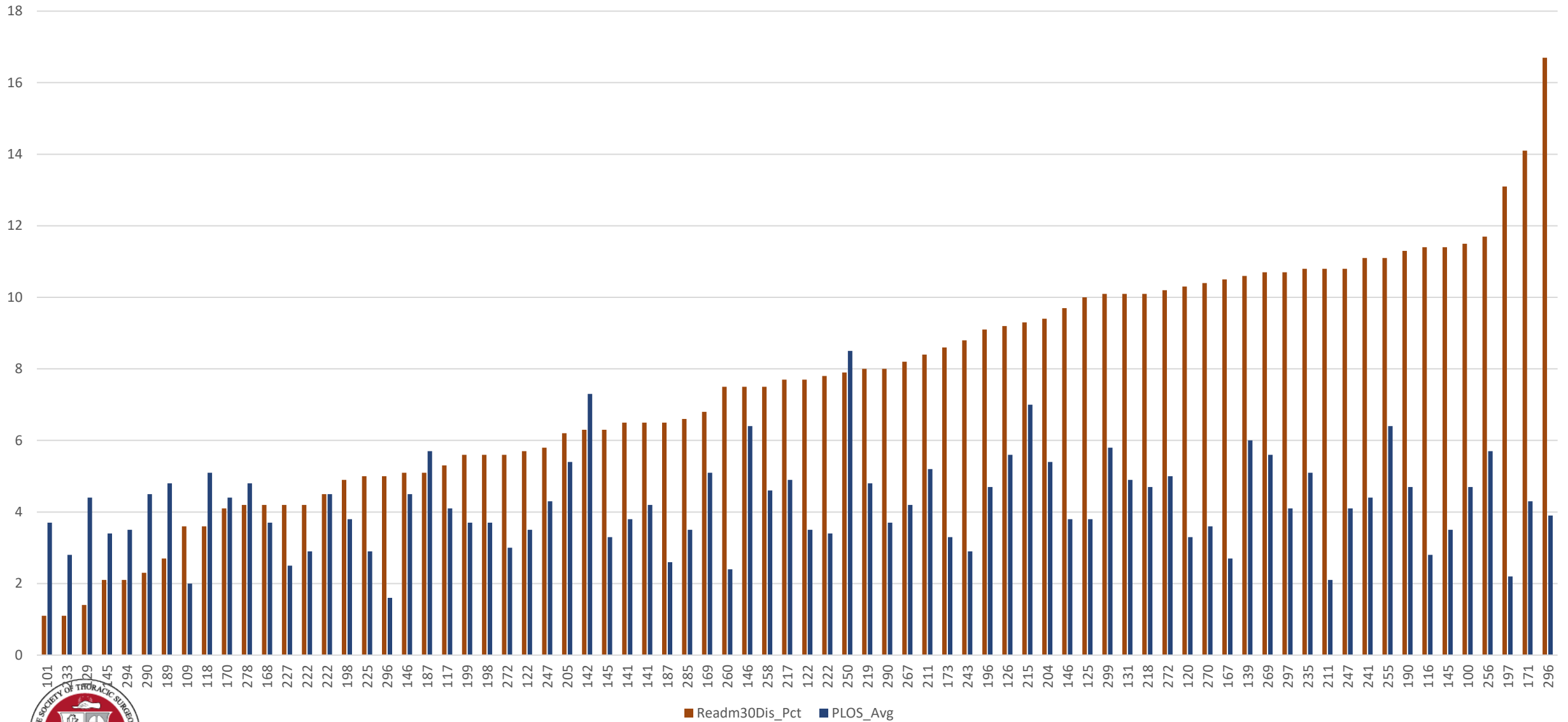
Readmission and Complication Rate
Sites with 70 - 145 records

Avg. Readmission Rate = 7.6%
Avg. Post Op Event Rate = 30.4%



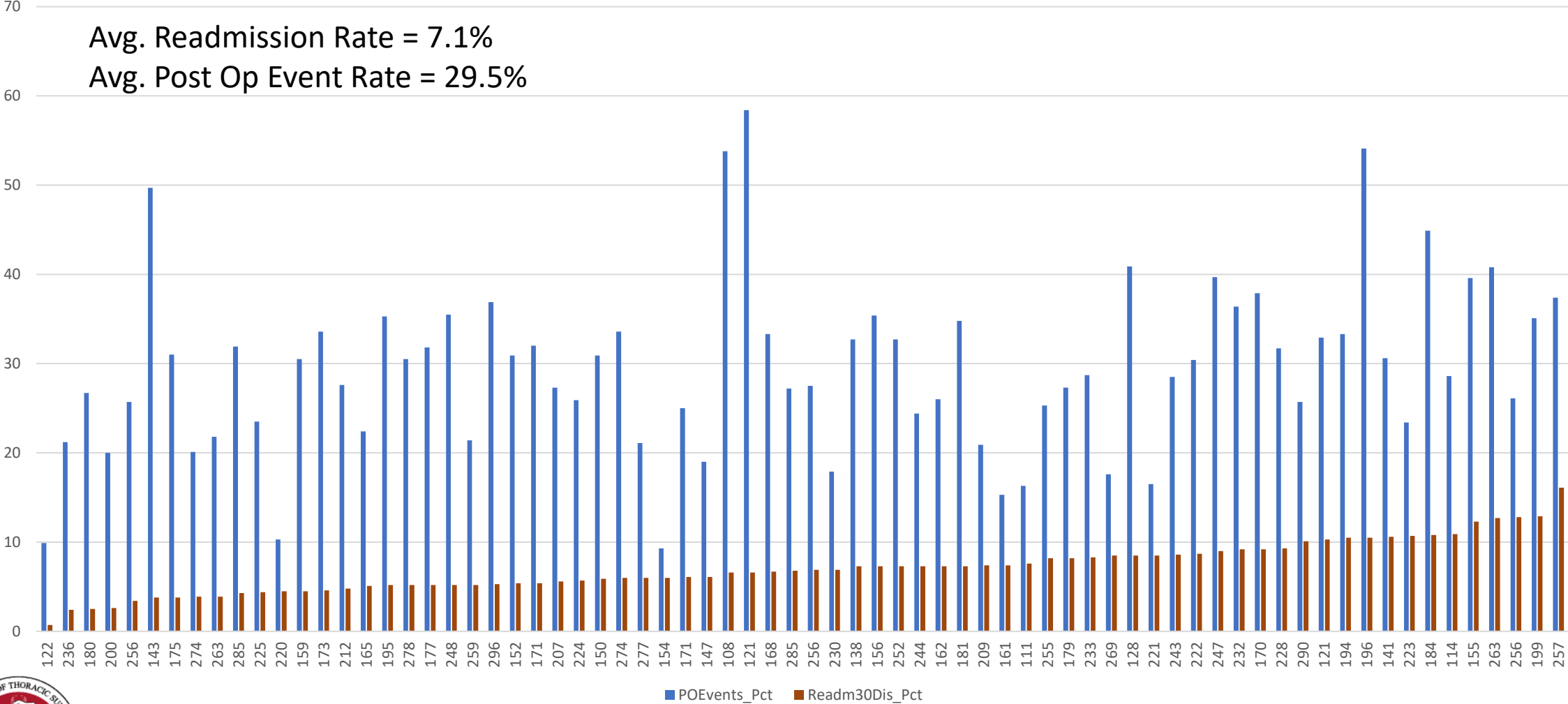
Readmission and Post-Operative LOS

Sites with 70-145 records

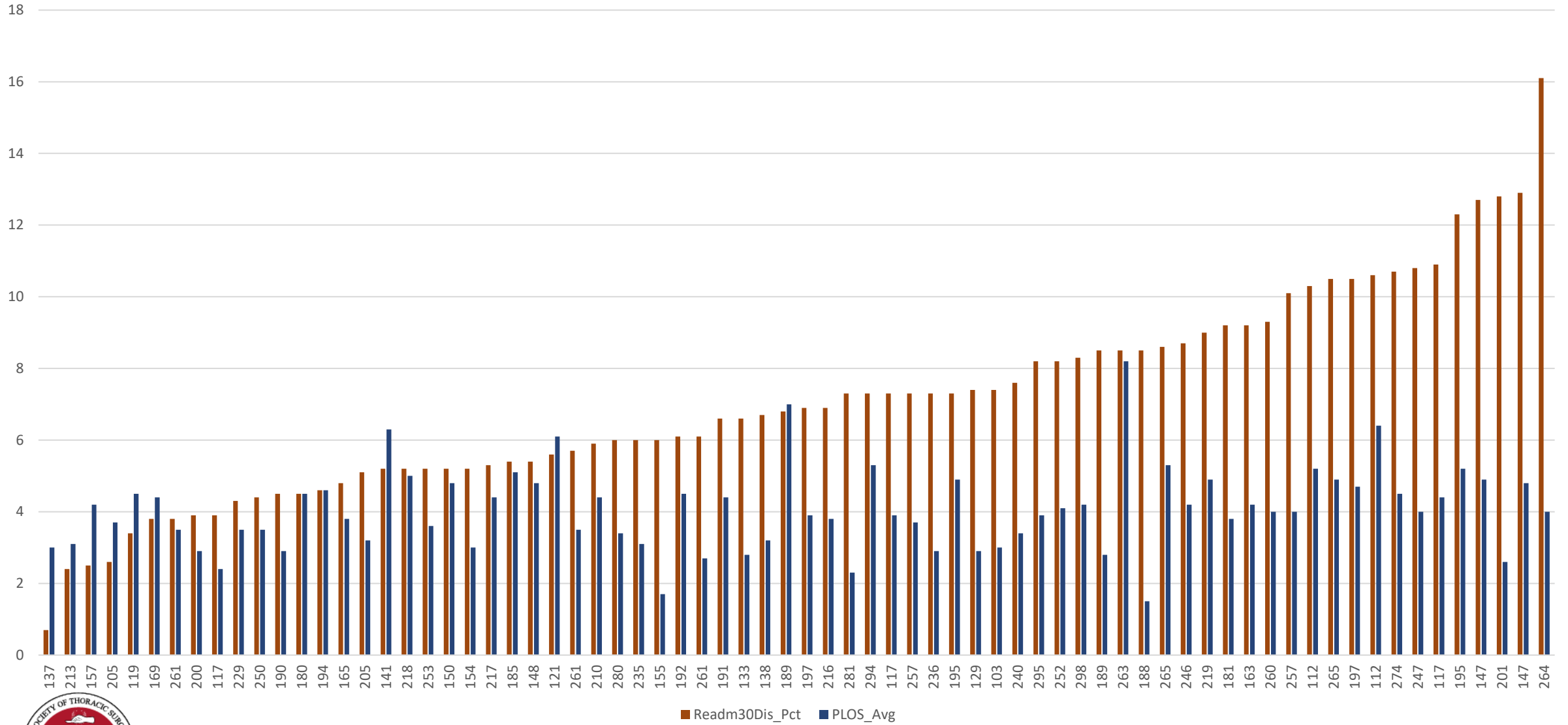


Readmission and Complication Rate
 Sites with greater than 145 records

Avg. Readmission Rate = 7.1%
 Avg. Post Op Event Rate = 29.5%



Readmission with Post-Op LOS Sites with more than 145 records





We would like to know.....

- Does your site have an Enhanced Recovery Program?
 - A. Yes
 - B. No
 - C. I don't know



We would like to know.....

- Has your site instituted a targeted QI Project looking at one of the specific Post Operative Events?
 - A. Yes
 - B. No
 - C. I don't know

We would like to know.....

- Does your site have routine multidisciplinary meetings to review your STS outcomes?
 - A. Yes
 - B. No
 - C. I don't know



Open Discussion



Please use the Q&A Function.



We will answer as many questions as possible.



We encourage your feedback and want to hear from you!

Upcoming GTSD Webinars

Monthly Webinars

- November 13 @ 2:30ET (1:30CT)
- December 11 @ 2:30ET (1:30CT)

Quality Improvement Series

- November 28 canceled: Happy Thanksgiving!
- December TBD



Contact Information

Leigh Ann Jones, STS National
Database Manager, Congenital
and General Thoracic

- Ljones@sts.org
- 312-202-5822

Helpdesk Support
(Harvest Questions/Analysis
Report Questions/IQVIA
Platform)

- STSDB_helpdesk@sts.org

Database Operational
Questions
(Billing, Contracts, etc.)

- STSDB@sts.org



STS National Database[™]
Trusted. Transformed. Real-Time.

THANK YOU FOR JOINING!